

Two False Flags in 2015! 8:15 Mystery Solved!



I have some very amazing news for you on this program: one of my subscribers believes he has solved the riddle of 8:15! As you know, 8:15 has manifested itself quite a bit lately, for example, when the Grand Jury announcement was made in Ferguson, Missouri which caused all those race riots, that announcement was made at 8:15 pm. That was not an accident. That was probably the worst possible time to issue an inflammatory grand jury announcement, when you have thousands of potential rioters in the streets just waiting for that announcement.

And 8:15 was also the time when this Sony cyber attack occurred and that was pointed out to me, also, just recently. And now, we have another 8:15 manifestation and that is flight 8501 that is missing out of Indonesia. Some of you, my subscribers, believe that was a fulfillment of 8:15. I don't believe so. I believe it is another warning from the Illuminati because the actual 8:15 event is going to be far more serious. It is going to be worse than 9/11 and that's why the subscriber who has solved this 8:15 riddle wants to be anonymous. He told me he has family he is concerned about and I believe that he is right on the money or he is very, very close to solving this 8:15 mystery.

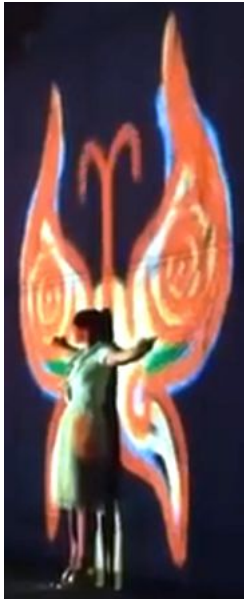
As you know, Ines Krupa says that the Holy Spirit revealed to her that 8:15 is not a day or a date or an hour but rather it is a mathematical problem and my anonymous subscriber agrees. He says that 8:15 does not give the day or the hour of this upcoming 9/11 event. It gives the location and there is not just one location. He says that the 8:15 tells us there are two locations.

First, he says we need to revisit that horrid iPad commercial from about a year ago. I did 4 or 5 programs at that time showing all the hidden symbolism. Remember this image of a woman giving birth; those two, large shapes on either side with the tiny stick-figure being born in the center. That was not accidental. That evil image was embedded in the iPad commercial.

No one has ever explained why they would hide an image of a woman giving birth. Was that a prank? Did the artist try to hide it in much the same way that Leo Tanguma hid sexual images in his Denver murals? Or the way Disney artists often hide sexual images in their movies?



And there were many other questionable images in that iPad commercial; for example, the woman in the cathedral where she has two pillars on either side.



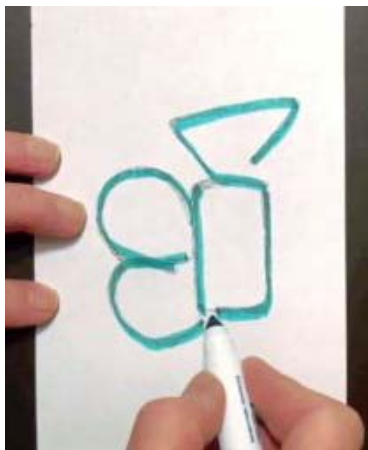
Do they represent the two pillars of Boaz and Jachin? Notice at the top of that image what looks like a smiley face. If we take a closer look, I think it's pretty obvious, or how about that very weird image of a woman who looks as if she is crucified to a butterfly which is growing horns? That is a pretty obvious image, at least to me, of MK Ultra mind control.

I thought at the time that the two false flags shown in this iPad commercial would occur at last year's Super Bowl. My anonymous subscriber believes rather it will occur at this year's Super Bowl. Let's take a closer look at that very evil image. I suppose those two large forms in the foreground on either side are meant to indicate hills or mountains but they sure look like a woman's thighs to me; and in the center is a tiny stick figure being born. Does he indicate the 'little horn' of Bible prophecy? That is the Antichrist whom the Illuminati are desperate to bring to birth at this time. They did not succeed in 2014. Will they succeed in 2015?

Also, in that image we see what looks like two catastrophic type events. I think the sun probably represents a nuclear explosion. The gray smudge to the right of that is probably some kind of a smoky fire and just below the horizon line you see what looks like two possible figures, two bodies on the ground or they could represent city skylines. In any event, I think what we see here are two major catastrophic type events, two 9/11 type events.



And also, if we take a closer look at the top of that picture, we see several very interesting number expressions: 'Scene 11-Shot 2'. That 'Shot 2' sure sounds like an assassination attempt to me. And could '11' and the number '121' represent a date? There are many possible dates in January: January the 1st, January the 11th. Or could the two 1's symbolize February the 1st, which is the date for this next year's Super Bowl.

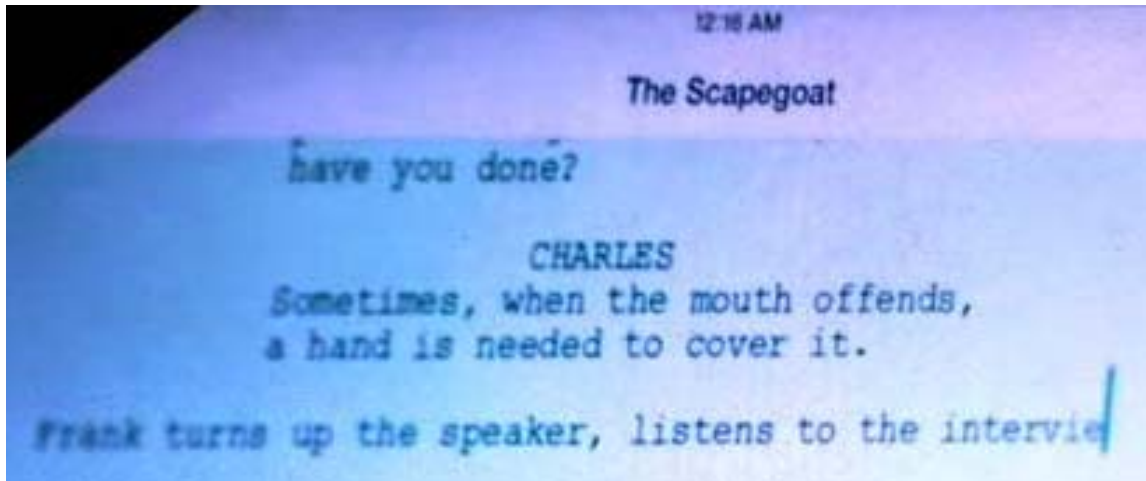


Next, let's take a closer look at that two-reel camera on the lower right. This is one of my anonymous subscriber's most amazing discoveries. If you turn that camera on its side, it represents 8:15. I think everyone can see the 8 in this diagram, I mean the 8 is pretty obvious. Next to it is simply the 1 and that becomes fairly clear also. Now the 5 is a little trickier but notice this gap here. That is not accidental. The 5 is basically an 'S' shape and once it's highlighted, I think you can see 8-1-5.

The next image from this iPad commercial we really need to take a look at. Incidentally, this commercial is called '**Your Verse**' and I'll put a link to it here. <https://vimeo.com/112042156> It seems that whenever the Illuminati have some dastardly deeds planned against

humanity, they have sort of an honor code and they have to tell you what they are planning to do and if you don't figure it out they have a moral right to perpetrate it on you.

Another example is the Georgia Guidestones. They admit on there they want to wipe out three-quarters of humanity.



And in this particular image from the iPad commercial we see what looks like a storyline and at the top of the storyline, it's called 'The Scapegoat'. Now, if that doesn't tell you this is about a false flag event I don't know what will. And there is a question at the top which isn't completely expressed and it undoubtedly says, 'What have you done?' And then Charles answers, he says, 'Sometimes, when the mouth offends, a hand is needed to cover it.' If that isn't a veiled threat I don't know what is.

Obviously this iPad commercial is telling anyone involved with this 9/11 false flag event, if they talk, there will be consequences. I mean it's going to take a lot of coordination to put two events on at very possibly the same time. At the bottom of this story script, we see the phrase '**Frank turns up the speaker, listens to the...**' and what is that last word? It's not quite complete. Evidently it is 'interview' and of course, '**The Interview**' is the name of that movie which caused the 8:15 cyber attack against the Sony Corporation. Another interesting fact about what is shown in this script is if you take out the proper names, 'Frank' and 'Charles', there are 15 words of dialogue and 8 words below that of the description (1); another 8:15 manifestation?

And now, we come to the most amazing analysis of my anonymous subscriber and he explains to us how 8:15 gives us the locations of this

false flag event. He says what you need to do is to superimpose a clock face upon a map of the United States.

Now, if we center this clock face on Ferguson, Missouri some very interesting alignments occur. Let's draw a line through the little hand to Phoenix, Arizona and why is that significant? Because that is the site of next year's Super Bowl, February 1st, 2015. And if we draw a line from the big hand, we find it points to just north of Raleigh, North Carolina, not that far from Washington, DC.



However, it is also possible to slightly turn the clock face. There is nothing that says the clock face must line up with

latitude and longitude, and if we line the little hand up with Hoover Dam, as you can see, Hoover Dam is near Las Vegas, and we extend the line of the little hand to another possible false flag site, then the big hand points to South Carolina.

And what is the significance of South Carolina? Well, Senator Lindsey Graham from South Carolina says that state may be the target of a nuclear attack. Here's what he said just about a year ago: **'Nukes in Hands of Terrorists Could Result in Bomb Coming To Charleston Harbor.'**

Graham: Nukes In Hands Of Terrorists Could Result In Bomb Coming To Charleston Harbor

September 3, 2013 12:55 PM



That is a startling headline and I know Alex Jones has discussed it on his program. He thinks Senator Graham may have inside knowledge of this upcoming false flag event.

Of course, it is not written in stone that the center of this 8:15 clock face must be Ferguson, Missouri. For example, at the end of the iPad commercial we see a marching band in the form of a dinosaur marching down the field and in the direct center, like a bullseye, is the big letter 'O'.



Does that indicate that maybe Ohio should be where we place the center of this particular clock face? Now, I realize I am putting a lot of two and twos together, however, there are just too many clues for us to ignore and we overlook them at our own peril, in my opinion. And I want to especially thank both Ines Krupa and my anonymous subscriber because I believe together you have solved the riddle of 8:15. And, just as it was pretty clever for the Illuminati to hide their secret plans in a clock face (2), it was equally brilliant of my subscribers to expose their plans for their next horrible false flag events.

1) It turned out that the '8:15' false flag event, predicted in this iPad commercial, occurred in France (Frank) at the Charlie Hebdo (Charles) headquarters on January 7, 2015.

2) The clock face theory had a lot of merit when you look at the locations of the Charleston Church bombing on June 17, 2015 and the San Bernardino terrorist attack on Dec 2, 2015.