

Hidden Bible Prophecy in Jade Helm 15 Logo

I will be taking another look at this amazing logo, for the Jade Helm 15 military operation, and I have made some more, amazing discoveries. This is not, just a military operation, this is spiritual warfare. This shows a battle between God and Satan, in these End Times, and you my subscribers, have given me a lot of interesting insights. Now I still believe, the two crossed arrows, represent Christianity, the cross, the transparent shoe in the center, that represents the Holy Spirit. However I'm also beginning to understand, that it also represents Mary, and that sword coming up from the Master of the Human Domain, who is Satan is attacking both Christianity and Mary.



And now here is what TheGroxt wrote, and this is very interesting. He said, *"It's the heel of Jesus bruising the serpent's head."* Well you're close Groxt, except that it is the heel of Mary who was prophesied to crush the head of the serpent, way back in Genesis 3:15. You are deriving your interpretation from a very poor Bible translation, probably the King James Version. The Catholic Douay Rheim's version is correct. Saint Jerome got it right: it is the woman, who is destined to crush the head of the serpent. *"The New World Order is God's will for 42 months, and you can't stop it."* Again I beg to disagree a little bit with you. We can't stop God's will in these End Times, however we can mitigate His punishments on this nation and we need to start praying, and repenting if we are going to survive. And The Groxt continues, *"For God has put in their hearts to fulfill His will, and to agree, and give their kingdom unto the beast until the words of God are fulfilled. And that's*

from Revelation 17:17. This will be used to test the lukewarm Christians." I agree on that with you 100% Mr Groxt. "The shoe is actually on the Economist 2015 cover".

Well, thank you very much for bringing that to my attention. Let's take a look at the cover of the Economist magazine.



Now this Economist magazine cover, has gotten a lot of coverage on the Internet, especially here on YouTube, because it purportedly shows a lot of possible events coming up for the year 2015, including by the way, a possible nuclear explosion, but the most interesting for me on this program, is that it also shows this Jade Helm 15 operation, and the hidden shoe next to President Obama's blue pants leg. Now what's really amazing to me, is that this manifestation of the Jade Helm 15

operation, on this Economist magazine cover, verifies everything that I have been saying. First of all, take a look at that shoe. See if you can find it. It's very well hidden, and that is one of the characteristics of the shoe on the Jade Helm logo. It is hidden.



Secondly, please note, there is only one shoe. Again, just like the Jade Helm logo. It's very unusual to depict shoes, other than as a pair of shoes, and thirdly, the shoe was facing in the same direction. It is facing to the, viewers left, that is to the wearer's right, but that's not all. Notice that there is a, ghost coming out of the shoe. And of course that

refers to the Holy Ghost, as I have been saying. Also notice the poster. The poster says, "Holiday". What holiday are they talking about? Holiday is derived from, holy day, and the holy day they are talking about, is the Feast of the Assumption in the Catholic Church, the Feast of Mary. And when does that occur? It occurs on August the 15th, 8/15. That shoe not only symbolizes the Holy Spirit, but also Mary, and remember, Mary is not only, the mother of God, that is Jesus Christ, but the spouse of the Holy Spirit. That union, between the ghost coming out on the shoe, and the shoe represents that amazing union, which brought forth upon Earth the Son of God, in the person of Mary's Son, Jesus Christ.

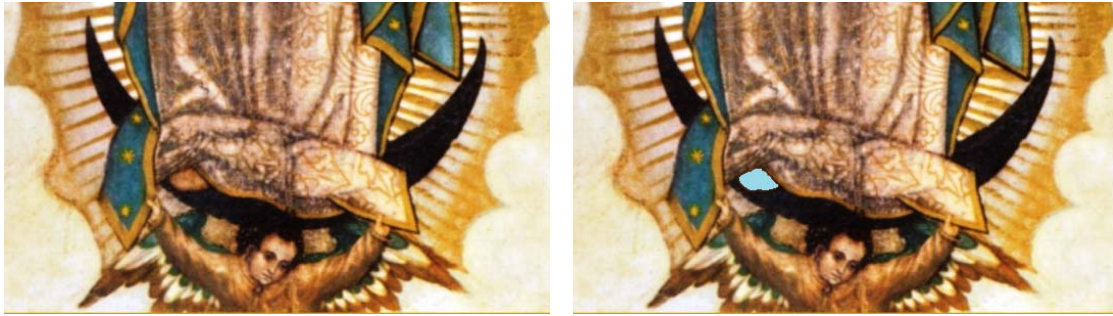
In other words, this Jade Helm 15 logo, is depicting the serpent, striking at the heel of the woman, as prophesied in Genesis 3:15, and in fact that struggle, is prefigured throughout the Bible, and a physical contact is never between Jesus, and Satan or the Anti-Christ. It's always between the woman and the prefiguring of the Antichrist, for example, Esther and Haman, for example, Jael and Sisera. In fact Jael's title is "blessed among women of the tent". She prefigures Mary. The same with Judith cutting off Holofernes' head. Even when David kills Goliath, there is no physical contact between David and Goliath. The contact, the dent in Goliath's head is made by one of those five, smooth pebbles. Those five smooth pebbles prefigure Mary's rosary.

And now I want to show you, where this shoe, this transparent shoe in the logo is derived from, because it is from a supernatural image, given by our Lord. And the image I am talking about, is Our Lady of Guadalupe, a miraculous image, painted by Almighty God, and given to the Mexican saint, Juan Diego.



This picture shows, the woman, back in Genesis who is, crushing the head of the serpent. The serpent is represented by that black crescent at the bottom. That black crescent also symbolizes Islam. This also pictures the woman in Revelation with a moon under her feet, that's the crescent moon, and she is clothed with the sun. This woman is Mary, but what we should take a closer look at, is the shoe that she is wearing. That shoe is what those two images on the Jade Helm logo and the

Economist magazine are derived from. Let's look at those specifics.



Mary's shoe is colored pale blue.

First of all, the shoe is hidden, very difficult to see in this image of Our Lady of Guadalupe. Secondly, there's only one shoe showing, very much like those other two images, and thirdly, the shoe, is facing to the left. In other words to the wearer's right, again, exactly as on the Economist cover magazine and the same as in the Jade Helm logo.

None of this is accidental people, and you have to take sides. Are you going to be on the side of the woman, who crushes the serpent? Or are you going to be on the side of the serpent who is striking at the woman's heel? In these End Times, those are the two choices that we have and that's what this Jade Helm logo is telling us, that's what the magazine cover of the Economist is telling us, and that's what Our Lady of Guadalupe is also telling us.